

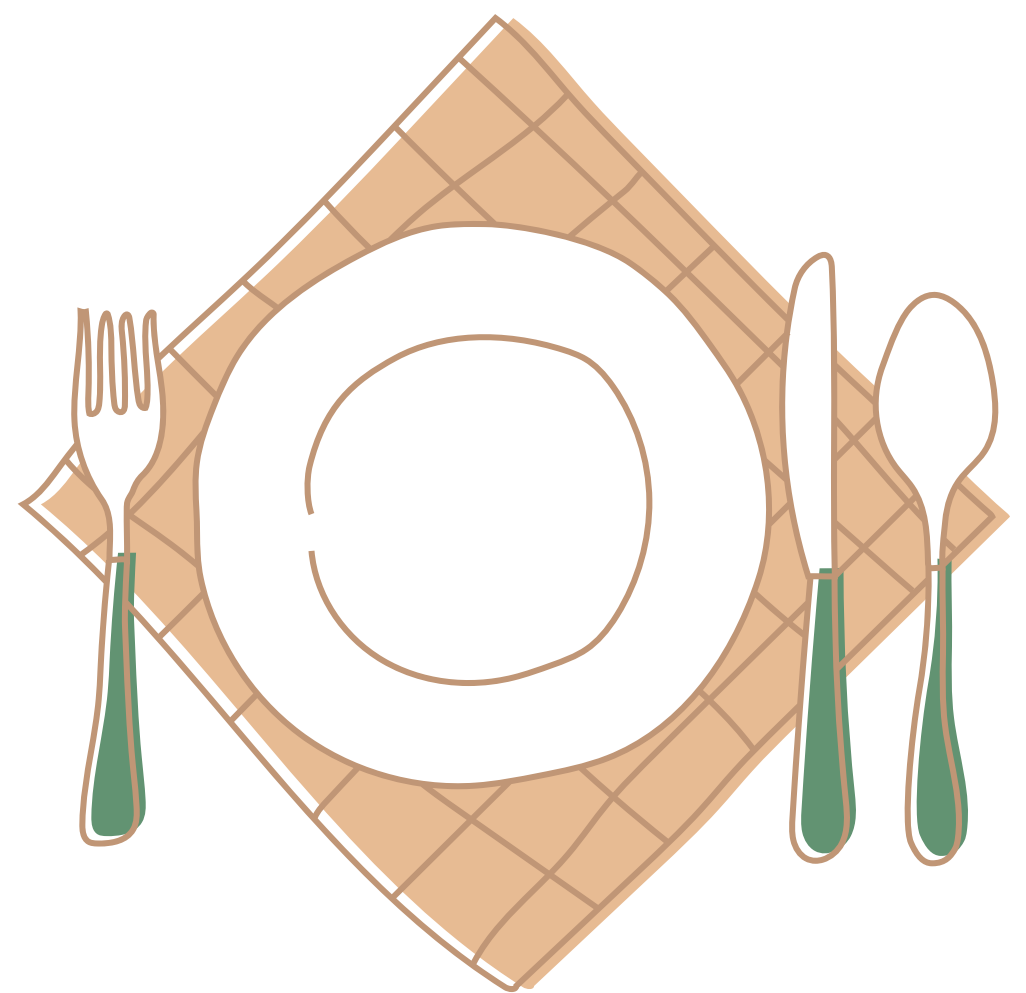


# PLEASE DON'T STAY AT THE BAR

Due to the Government safety guidance, we are unable to have anyone sat or stood at our bar for more than a few minutes at present.

## SIT AT A TABLE

We are operating a full table service. Please make your way to a table and we will come and take your order.



## WE'LL BRING YOUR FOOD & DRINKS TO YOU

Once you have ordered, we will bring everything over to you.



## WHILST YOU'RE HERE...



### USING THE TOILETS

We are operating a one-in-one-out system for our ladies toilets, as they are small. There is a sign on the door for you to flip when you go in to let others know it is engaged.



### TABLE SERVICE

As per Government guidance you should remain seated whenever possible, only moving around the building to visit the toilets. Please wear your mask when you do get up from your table.



### USE THE SANITISER PROVIDED

We have hand sanitiser at all entrances to the pub. Please help us by using this before you come inside.





## USING THE TOILETS



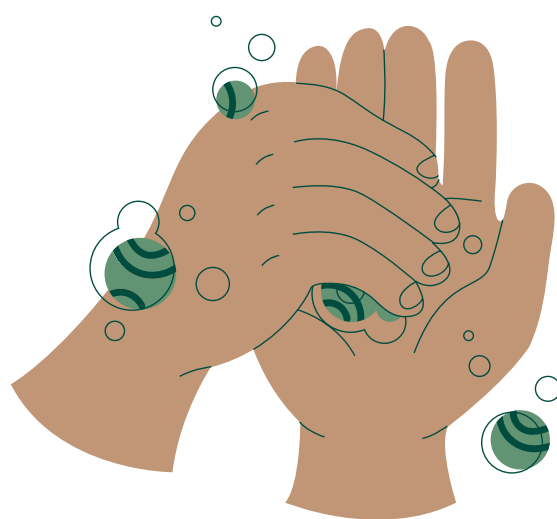
## ONE PERSON AT A TIME

We are operating a one-in-one-out system for our ladies toilets, as they are smaller. Please flip the sign on the outside door whilst you are in the toilets to let others know it's engaged. Children can be supervised by one adult.



## USE THE CLEANER PROVIDED

We have provided cleaner for you to use on any surfaces you touch whilst using the toilets (we'll also be doing extra cleaning too!) Please help us protect you by spraying the taps and soap dispenser before you touch them.



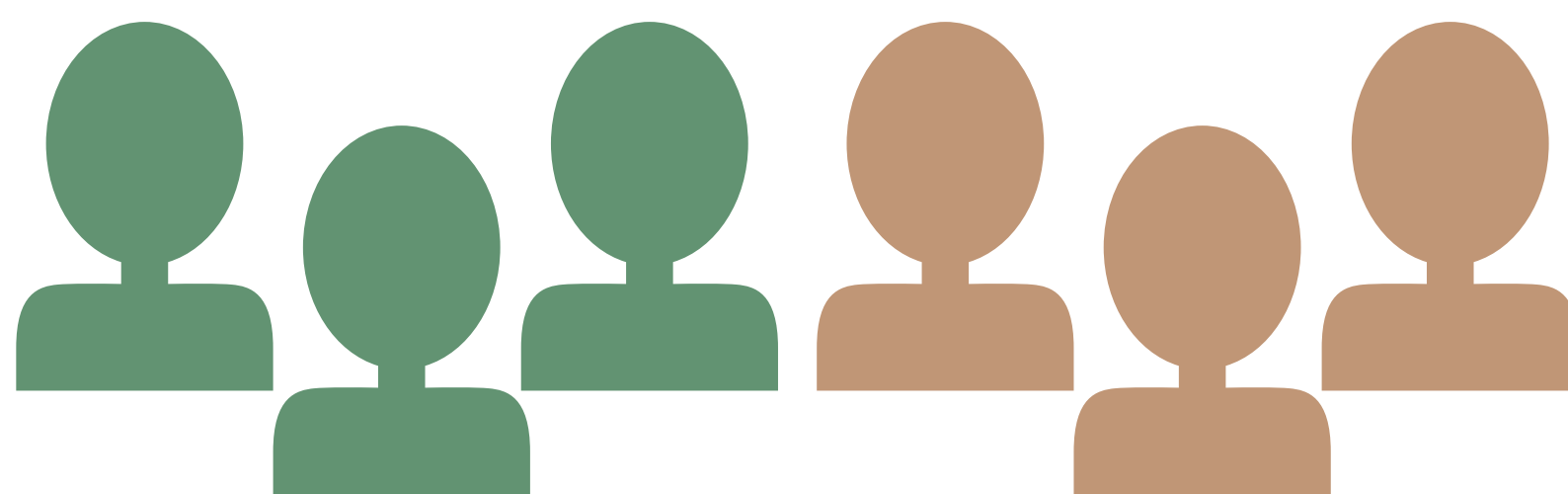
## WASH YOUR HANDS

The most effective way to stop the spread of Covid-19 is to wash your hands thoroughly with soap. It's advised you do this for at least 20 seconds, then use our disposable paper towels to dry your hands.



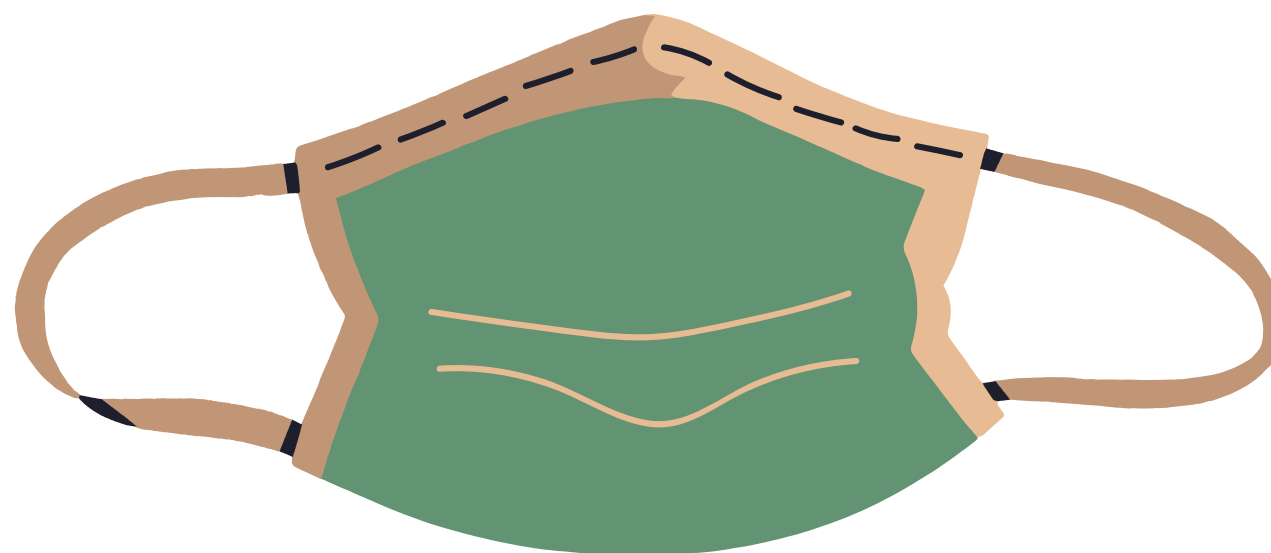
## RULE OF 6

We can **only seat groups of up to 6 people**, unless your household is larger than this and you would like to eat out together.



## PLEASE WEAR YOUR MASK

We all now need to wear a mask when moving around the building.  
Our serving staff will wear a mask or visor at all times.



## CONTACT DETAILS

Please share your contact details either via the NHS QR poster and app, or by completing one of our contact forms (please ask a member of staff).

